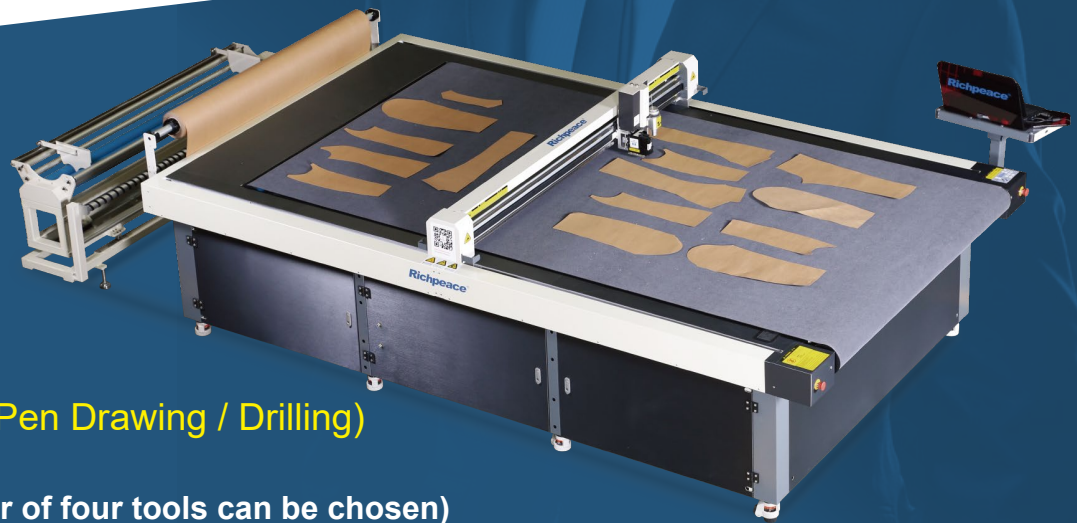




Richpeace 3 in 1 Automatic Cutting Machine (Cutting & Printing & Drawing)

Richpeace®



One Machine

Three Functions

(Cutting+Inkjet Printing + Pen Drawing / Drilling)

Working type (Cutting: either of four tools can be chosen)

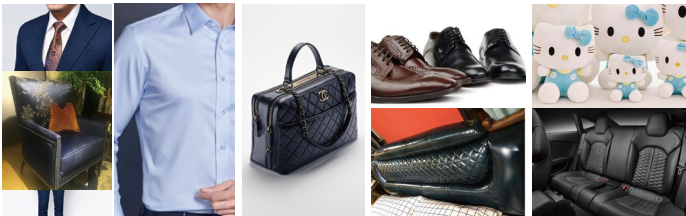
1. Inkjet printing + Cutting (Cut pieces and sample patterns can be done at the same time)
2. Pen drawing + Cutting (Suitable for marking and cutting of fur clothing)
3. Drilling + Cutting (Suitable for drilling and cutting of cutting pieces)
4. Cutting (Only for cutting)

Standard configuration:

Circular knife + Inkjet printing +Pen drawing / Drilling +ordinary feeding stand

Application

Drawing / cutting / marking of flexible materials used in clothing, shoes and hats, luggage, home textiles, furniture, home furnishing, automobiles, ships, aviation and other industries.



Applicable Cutting Materials

Knitted / woven / leather / rubber / non-woven fabric / felt / kraft paper / all kinds of cardboard / KT board / Composite, etc.



Optional Tools



[Drilling Knife]

Standard

The knife rotates with kinetic energy to drill the composite material ($\leq 3\text{mm}$). The hole is smooth and round, and its diameter is optional for 1-6mm.



[Circular Knife]

Standard

Suitable for single-layer soft and thin fabrics ($\leq 3\text{mm}$). Such as: general knitted / woven fabrics, non-woven fabrics, cotton and linen, blended fabrics, viscose interlining, etc.



[Straight Knife]

Optional

For cutting paper (kraft paper / laminated paper / cardboard within 4mm), KT board, single-layer leather, etc.



[Vibrating Knife]

Optional

Suitable for cutting soft medium-density materials. Its high-frequency vibration ensures that the tool cuts at high speeds and improves output.



[Pneumatic knife]

Optional

A knife driven by compressed air, combined with compressed air of 0.6-0.8MPa and a stroke of 8mm, more suitable for the heavier material cutting.

Machine parameters

Model	Max Cutting Area (L×W×H) (mm)	Installation Area (L×W×H) (mm)	Feeding Stand Size (L×W×H) (mm)
RPFP-NM-ID+PD+SKC-1-1200×1600-SGSF-WC2+P+CK-AF-3P380	1200×1600	2300×2600×1300	1000×2600×1300
RPFP-NM-ID+PD+SKC-1-1500×1600-SGSF-WC2+P+CK-AF-3P380	1500×1600	3000×2600×1300	1000×2600×1300
RPFP-NM-ID+PD+SKC-1-2500×1600-SGSF-WC2+P+CK-AF-3P380	2500×1600	4000×2600×1300	1000×2600×1300
RPFP-NM-ID+PD+SKC-1-1500×1800-SGSF-WC2+P+CK-AF-3P380	1500×1800	3000×2800×1300	1000×2800×1300
RPFP-NM-ID+PD+SKC-1-2500×1800-SGSF-WC2+P+CK-AF-3P380	2500×1800	4000×2800×1300	1000×2800×1300
Working Method	Circular knife cutting + Pen draw / Drilling knife + Inkjet print. Optional: Pneumatic knife / Vibrating knife / Straight knife.		
Cutting Speed	Max 1000mm /s (Working speed varies on the tools and materials)		
Cutting Thickness	≤20mm (Varied on the tools and materials)		
Cutting Accuracy	≤0.1mm (Excluding the material itself deformation)	Repeatability (positioning precision)	±0.05mm
Plotting Method	HP45 2-cartridge plotting+ pen drawing	Data Transmission	USB2.0
Drawing Pen	Gel pen, ball pen, mark pen	Machine Running Decibel	≤80db
Drilling Knife	Kinetic energy drilling knife (Diameter 1-6mm optional)	Data Format	HPGL
Continuous Cutting	Optional Automatic Feeding stand	Working Voltage	AC380V±10% 50/60Hz 5kW (three phase five wire system)
Material Fixing Method	Sectioned vacuum adsorption	Temperature	0°C~40°C
Transmission Structure	High-precision synchronous belt + linear guide rail	Relative Humidity	≤85% (25°C) No condensation
Control System	Imported full servo	Air Pressure	0.6-0.8MPa

Main configuration

Control System	Richpeace	Servo System	Panasonic / Fuji
Bearing	NSK	Synchronous Belt	BANDO
Linear Guide	PMI	Sensor	Omron
Electrical Switch	Schneider	Cable / Carrier	Igus
Pneumatic Components	SMC	Inverter	Delta

Optional

1. Vibrating knife/Pneumatic knife/Straight knife.
2. Constant tension feeding rack (suitable for elastic fabrics).
3. Silent air pump.

RICHPEACE AMERICA

4220 Steve Reynolds Blvd. Suite 14. Norcross, GA 30093
 Email: marketing@richpeace.com
www.richpeaceamerica.com
 T: 770-817-9410