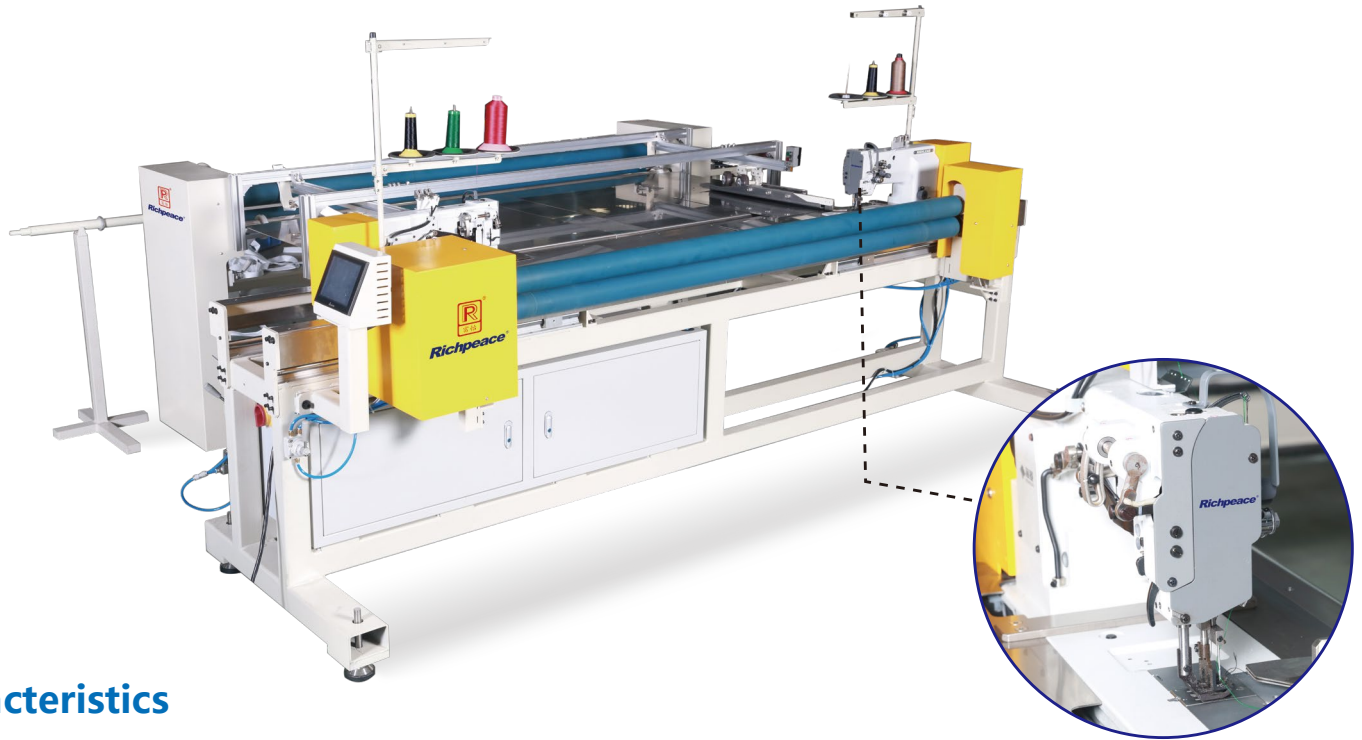




Richpeace[®]

Richpeace Continuous Feeding Both Sided Folded Seam Sewing Machine

RPQP-NM-O-2-LR-IS-VR4.7-3P380V



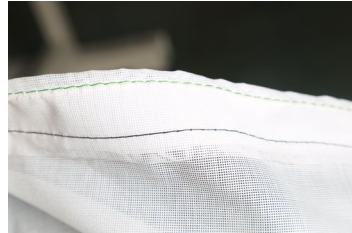
Characteristics

1. Stitch Length 2mm-7mm.
2. Fabric Width: Range from 1800mm to 2000mm. (customization is possible)
3. Double-thread and single-thread foldable seams. (Optional overlock machine head)
4. While folding, able to wrap & fold inside with reinforced tape and rope.
5. Both Left/Right sewing heads are adjustable for various fabric width.

Foldable Seam
Double Thread/Single Thread

Application

Suitable for curtains, tarpaulins & waterproof cover products with continuous both edges sewing requirement.



RICHPEACE AMERICA

www.richpeaceamerica.com

4220 Steve Reynolds Blvd. Suite 14
Norcross GA 30093
Tel. 770-817-9410
marketing@richpeaceamerica.com

Parameters

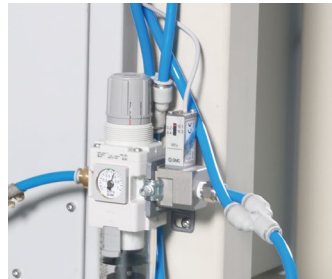
Sewing Width (customization is possible)	1800mm-2000mm
Max. Speed	2000RPM
Operation Screen	7 inches LCD Touch Screen
Stitch Length	2mm – 7mm can be adjusted
Pattern Transmission	USB Storage
Power Supply	Three Phase 380v
Rotary Hook	X3 Jumbo Rotary Hook
Stitch Type	Double Needles Lock Stitch. Needle distance: 25mm
Air Pressure	0.6MPa
Power	3kW
Dimension	3300mm×2300mm×1700mm(LxWxH)

Configuration

【7 inches LCD Touch Screen】



【SMC Pneumatic Component】



【Igus (Germany) Energy Chain】



【Double-Needle Sewing Machine Head】



Machine Layout Dimension

Unit: mm

